

AMI HIGH YIELD FIXED INCOME PRODUCT PROFILE

AMI Asset Management

March 2019

Firm Summary

Founded in 1994, AMI has a 25+ year track record of success in serving both Institutions and High Net Worth Individuals. AMI manages separate accounts within the Fixed Income (Municipal, Core and High Yield) and Equities (Large Cap Growth, Small Cap Growth, SMID Cap Growth and Domestic Large Cap Equity Income) asset classes. The investment team has 158+ years of investment experience and the firm has approximately \$1.7 billion in assets under management as of March 31, 2019.

High Yield Fixed Income Investment Objectives

AMI's High Yield Fixed Income objective is to provide current income consistent with preservation of capital and growth of capital as a secondary objective. AMI fixed income portfolios are constructed for capital preservation, liquidity, and predictable cash flow.

Strategy

- AMI believes that High Yield index construction are broke, with the most indebted companies making up the largest portion of the index.
- We focus on smaller issuers and special situations to deliver strong risk adjusted returns. Our bias is for BB rated credits.
- We employ fundamental bottom up security selection and top-down risk management.
- Holdings are revisited on a quarterly basis for fundamental quality declines.
- We will hold up to 20% investment grade corporate bonds

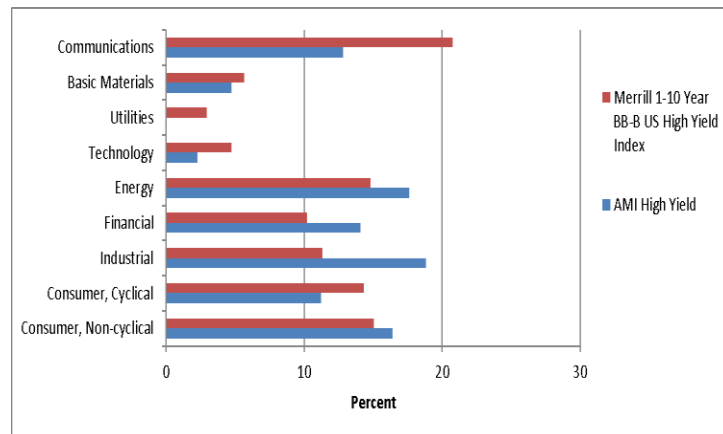
General Portfolio Characteristics

	AMI	BofA 1-10 BB-B High Yield Index
Credit Quality	BB	BB-
Effective Maturity	8.82 Years	4.69 Years
Modified Duration	3.99 Years	3.47Years
Yield to Maturity	4.95%	5.98%
Yield To Worst	4.80%	5.71%
Coupon	5.61%	6.07%

As of 3/31/19. Source – AMI and Bloomberg. The portfolio characteristics information is being presented as supplemental information to the AMI High Yield Capital Appreciation Composite.

High Yield Fixed Income investing involves risk and might not be suitable for all individuals.

Portfolio Composition



As of 3/31/19. Source – AMI and Bloomberg. The portfolio composition information is being presented as supplemental information to the AMI High Yield Capital Appreciation Composite.

Performance

Period Returns (Since Inception 1-1-13)	AMI Returns (Gross)	AMI Returns (Net)	B of A 1-10 BB-B High Yield Index
YTD	5.50%	5.25%	7.20%
1 Year	5.96%	4.92%	6.44%
3 Year	5.37%	4.33%	7.48%
5 Year	4.38%	3.35%	4.41%
Inception	4.58%	3.55%	5.02%

As of 3/31/19. Net returns are based on an annual fee of 1.00%. Past performance is not an indication of future returns. The above reflects the performance of the AMI High Yield Capital Appreciation Composite and includes the reinvestment of income.

Annual Performance

Year	AMI Returns (Gross)	AMI Returns (Net)	Merrill 1-10 Year BB-B High Yield Index
2013	4.44%	3.41%	6.47%
2014	3.42%	2.40%	2.75%
2015	1.75%	0.74%	-2.82%
2016	8.75%	7.69%	13.96%
2017	5.29%	4.25%	6.41%
2018	-0.33%	-1.32%	-1.73%

Above: As of 3/31/19. Net returns are based on an annual fee of 1.00%. Past performance is not an indication of future returns. The above reflects the performance of the High Yield Capital Appreciation Composite and includes the reinvestment of earned income. Please refer to important disclosures at the bottom of the page. Source - AMI

Right: The Top Ten Holdings information is being presented as supplemental information to the High Yield Capital Appreciation Composite. *Data provided by Bloomberg Professional. As of 3/31/19. Holdings are subject to change. The reader should not assume that an investment in the securities identified was or will be profitable. A complete list of all buy and sell recommendations for this strategy within the last 12 months is available upon request. AMI Asset and/or one or more of its employee may have a position in these securities and may purchase and sell such securities from time to time.

AMI Top 10 Holdings		Index Top 10 Weights by Ticker	
1.	United Rentals North America 5.500% Due 05-15-27	3.45%	Sprint Corp 1.98%
2.	Bank Amer Corp. 6.300% Due 12-31-49	2.70%	Charter Communications 1.93%
3.	Matador Resources Co 5.875% Due 09-15-26	2.60%	Bausch Health Care (Formerly Valeant) 1.77%
4.	T Mobile USA Inc. 6.000% Due 03-01-23	2.55%	Altice USA 1.48%
5.	Olin Corp. 5.500% Due 08-15-22	2.52%	Tenet Healthcare 1.46%
6.	Diamondback Energy Inc. 5.375% Due 05-31-25	2.52%	HCA Healthcare 1.30%
7.	Aircastle LTD 4.400% Due 09-25-23	2.46%	T Mobile USA 1.14%
8.	Lamar Media Corp. 5.000% Due 05-01-23	2.43%	Dish Network 1.00%
9.	Graphic Packaging Intl. Inc. 4.750% Due 04-15-21	2.43%	Frontier Communications 0.94%
10.	Ball Corp 5.250% Due 07-01-25	2.42%	TransDigm Group .094%
Total Top 10 Holdings		26.08%	Total Top 10 Holdings 13.94%

AMI Asset Management High Yield Capital Appreciation Composite January 1, 2013 through December 31, 2018

Year	Total Firm Assets (\$)	Total Composite Assets (\$)	Composite Composed of Carve-Outs (%)	Composite Accounts at Year-End	Composite Non-Fee-Paying Accounts (%)	Total Return % (Gross)	Total Return % (Net)	ML U.S. Corporate & Government Master Index Return (%)	Internal Dispersion (%)	Composite 3-Yr St Dev (%)	Benchmark 3-Yr St Dev (%)
2013	1,202,048,130	7,439,119	0	3	0	4.44	3.41	6.47	n/a [†]	n/a ^{††}	n/a ^{††}
2014	1,476,318,603	8,351,478	0	4	0	3.42	2.40	2.75	n/a [†]	n/a ^{††}	n/a ^{††}
2015	1,756,380,341	7,456,865	0	3	0	1.75	0.74	-2.82	n/a [†]	3.73	5.03
2016	1,683,058,163	7,336,284	0	3	0	8.75	7.69	13.96	n/a [†]	3.20	5.30
2017	1,800,838,245	7,647,848	0	3	0	5.29	4.25	6.41	n/a [†]	2.84	4.81
2018	1,580,254,746	7,298,282	0	3	0	-0.33	-1.32	-1.73	n/a [†]	2.41	3.77

[†] The composite contains five or fewer households and therefore no internal dispersion is calculated.
^{††} Not applicable due to less than 36 months of data.

1. AMI Asset Management Corporation (“AMI”) claims compliance with the Global Investment Performance Standards (GIPS®) and has prepared and presented this report in compliance with the GIPS standards. AMI Asset Management has been independently verified for the periods January 1, 1998 through December 31, 2018. The verification reports are available upon request.

Verification assesses whether (1) the firm has complied with all the composite construction requirements of the GIPS standards on a firm-wide basis and (2) the firm’s policies and procedures are designed to calculate and present performance in compliance with the GIPS standards. Verification does not ensure the accuracy of any specific composite presentation.

2. AMI is an independent investment management firm registered with the Securities and Exchange Commission. AMI was established in 1994; however, we did not start investing on clients’ behalf until 1998. AMI manages equity and fixed income accounts for our clients. We offer seven investment options: Domestic Large Cap Growth Strategy, Domestic Small Cap Growth Strategy, Domestic Small-Mid Cap Growth Strategy, Domestic Large Cap Equity Income Strategy, Government/Corporate Fixed Income Strategy, Intermediate Quality Tax Exempt Strategy and a High Yield Capital Appreciation Strategy.

3. The High Yield Appreciation Composite includes all fully discretionary, fee-paying and non-fee paying, taxable and nontaxable accounts with at least \$750,000 in high yield bonds on the last day of each previous quarter. AMI manages the High Yield Appreciation Composite for our clients with the goal of achieving long term returns in excess of the BofA Merrill Lynch U.S. High Yield BB-B Rated 1-10 Year Index. The composite was created on January 1, 2013. Policies for valuing portfolios, calculating performance and preparing compliant presentations are available upon request.

4. Returns are presented gross and net of management fees and include the reinvestment of all income. Gross returns are presented before management fees but after all trading expenses. Net returns are calculated by deducting an annual fee of 1.00% from the quarterly gross composite return. The annual fee schedule is as follows: 1.00% for all asset amounts.

5. The benchmark we use is the BofA Merrill Lynch U.S. High Yield BB-B Rated 1-10 Year Index which is a subset of the Merrill Lynch U.S. High Yield including all securities with a remaining term to final maturity less than 10 years and rated BB1 through B3, inclusive.

6. The actual cash and cash equivalents are used in the performance.

7. High Yield investments can be significantly affected by interest rate risk (as interest rates rise, bond prices fall), the risk of issuer default, issuer credit risk, and inflation risk. Past performance is not indicative of future results. The performance information is supplied for reference. Results will vary among accounts.

8. Valuations and returns are computed and stated in U.S. dollars. The internal dispersion of annual return is measured by the standard deviation of equal-weighted household returns presented within the composite for the full year. The three-year annualized standard deviation measures the variability of the composite and the benchmark returns over the preceding 36-month period. Accounts managed by AMI Asset Management Corporation do not make use of leverage, derivatives or short positions.

9. A significant cash flow is defined as a cash flow greater than 20% of the high yield bond portfolio.

10. To receive a complete list of composite descriptions, contact Katharine Kim at (424) 320-4003, or write to us at AMI Asset Management Corporation, 10866 Wilshire Boulevard Suite 770, Los Angeles, California 90024, or Katharine@amiassetmanagement.com.